

28' x 60' Classroom



Building Details:

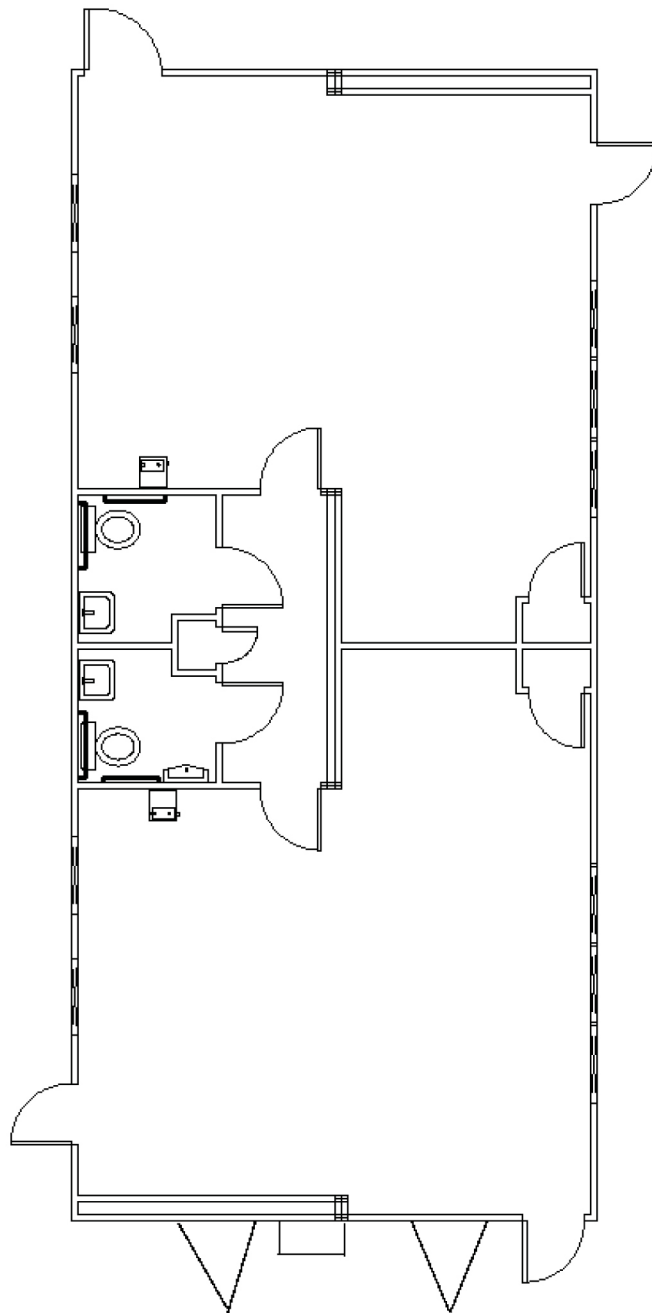
Asset #: MS Stock Inventory
State Seal: MS
Building Size: 28 x 60
Square Footage: 1680
Occupancy: E - Education
Roof Load: 20 PSF
Wind Load: 150 MPH
Floor Load: 70 PSF
Electrical: Single Phase / 200 AMP Panel / 120/240 Volts

Exterior Details:

Siding Material: .019 Aluminum
Roofing Material: .045 EPDM
Frame: Perimeter
Doors: (4) Single
Windows: (10) 46" x 40" Vertical Slide
HVAC: (2) 3 Ton / 10 kw Heat Strip

Interior Details:

Wall Finish: Vinyl Covered Gypsum
Floor Finish: Vinyl Block Tile
Lighting: Fluorescent
Ceiling: Hard
Restrooms: (2) Single Stall
Additional Features: (2) Closets, Markerboards and Tackboards



**This building is subject to availability. The details provided are for informational purposes only and are not guaranteed. For detailed specifications, drawings and pricing contact your local representative.

Contact:

Toll-free 877.677.2231
Phone: 732.223.4407
Fax: 732.223.4458
Email: sales@mspaceholdings.com

The M|SPACE Promise

You'll receive more industry expertise, more personal attention, and more financing options from M|SPACE than from any other modular space company.