

# 28' x 50' Modular Office



## Building Details:

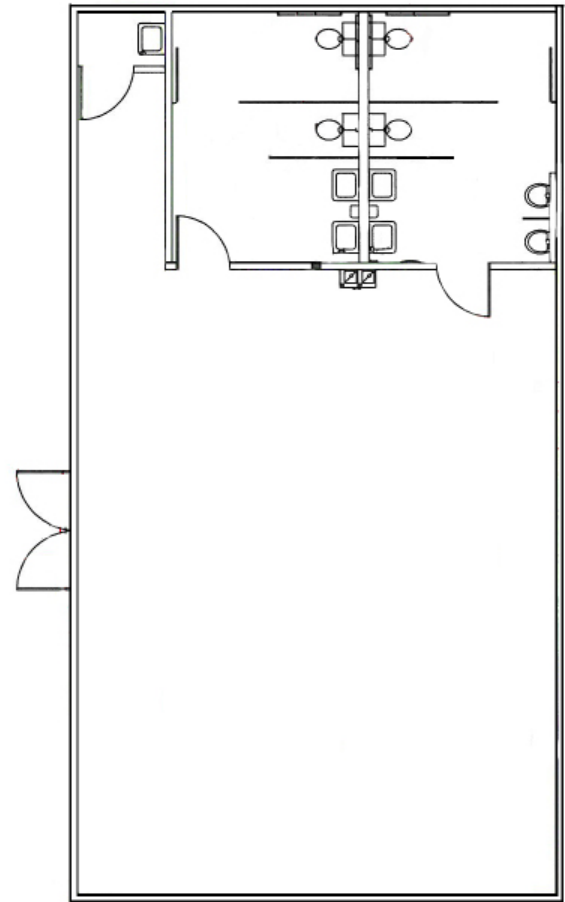
Asset #: MO00075  
State Seal: TX, LA  
Building Size: 28 x 50  
Square Footage: 1400  
Occupancy: B - Business  
Roof Load: 20 PSF  
Wind Load: 130 MPH  
Floor Load: 50 PSF  
Electrical: Single Phase / 150 AMP Panel / 120/240 Volts

## Exterior Details:

Siding Material: Smart Panel  
Roofing Material: .045 EPDM  
Frame: Outrigger  
Doors: (1) Double  
Windows: (4) Single  
HVAC: (2) 3 Ton / 5 kw Heat Strip

## Interior Details:

Wall Finish: Vinyl Covered Gypsum  
Floor Finish: Vinyl Composition  
Lighting: (8) 4 Tube T12, (3) 2 Tube T-12  
Ceiling: T-Grid  
Restroom: (2) Handicapped



\*\*This building is subject to availability. The details provided are for informational purposes only and are not guaranteed. For detailed specifications, drawings and pricing contact your local representative.

## Contact:

Toll-free: 877.677.2231  
Phone: 732.223.4407  
Fax: 732.223.4458  
Email: [sales@mSPACEholdings.com](mailto:sales@mSPACEholdings.com)

## The M|SPACE Promise

You'll receive more industry expertise, more personal attention, and more financing options from M|SPACE than from any other modular space company.