

# 36' x 68' Classroom



## Building Details:

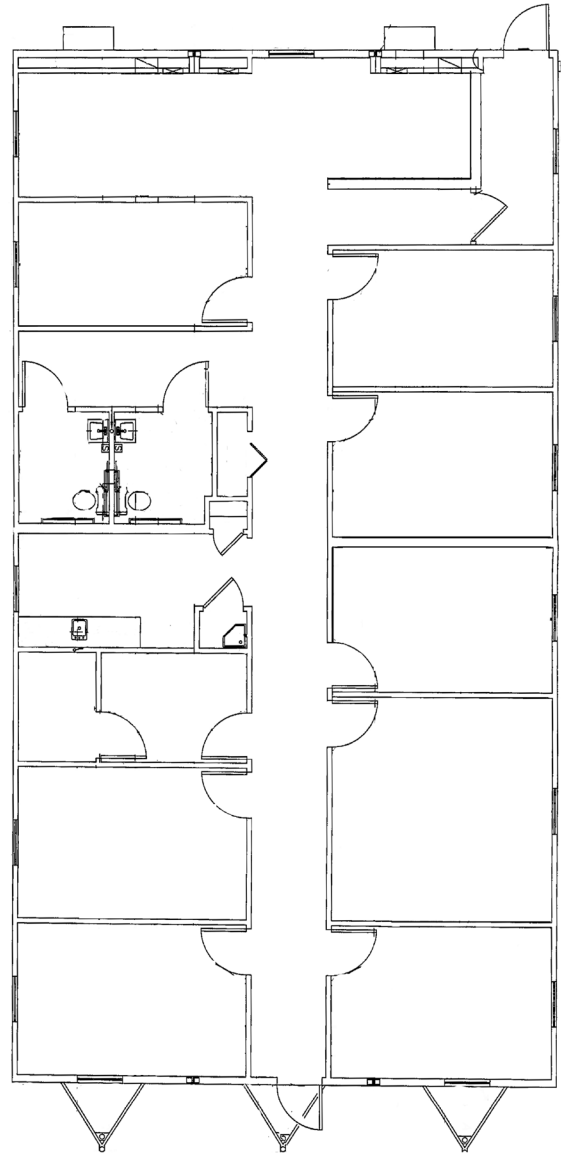
Asset #: CR00073  
State Seal: FL  
Building Size: 36 x 68  
Square Footage: 2448  
Occupancy: B-Business  
Roof Load: 30 PSF  
Wind Load: 146 MPH  
Floor Load: 100PSF in Lobby, 50 PSF Elsewhere  
Electrical: 3 Phase / 100 AMP Panel / 120/208 Volts

## Exterior Details:

Siding Material: Hardi Panel  
Roofing Material: .045 EPDM  
Frame: Perimeter  
Doors: (2) Single  
Windows: (14) Vertical Slide  
HVAC: (2) 3.5 Ton / 9 kw Heat Strip

## Interior Details:

Wall Finish: Vinyl Covered Gypsum  
Floor Finish: Carpet in Classrooms, Tile in Restrooms  
Lighting: Fluorescent  
Ceiling: T-Grid  
Restroom: (2) Single Stall



\*\*This building is subject to availability. The details provided are for informational purposes only and are not guaranteed. For detailed specifications, drawings and pricing contact your local representative.

## Contact:

Toll-free: 877.677.2231  
Phone: 732.223.4407  
Fax: 732.223.4458  
Email: [sales@mspaceholdings.com](mailto:sales@mspaceholdings.com)

## The M|SPACE Promise

You'll receive more industry expertise, more personal attention, and more financing options from M|SPACE than from any other modular space company.