

# Classroom Complex



## Building Details:

Asset #: CR00050A

State Seal: CT

Building Size: 45 x 99 (Section 1)  
132 x 66 (Section 2)

Square Footage: 4455 (Section 1)  
8712 (Section 2)

Occupancy: E - Education

Roof Load: 40 PSF

Wind Load: 130 MPH

Floor Load: 60 PSF

Electrical: 3 Phase / 100 AMP Panel / 110/208 Volts

## Exterior Details:

Siding Material: Smart Panel

Roofing Material: .45 EPDM

Frame: Perimeter

Doors: (2) Section 1, (3) Section 2

Windows: 4' x 4' Horizontal Sliders

HVAC: Wall Mount Electric

## Interior Details:

Wall Finish: Vinyl Covered Gypsum

Floor Finish: Vinyl Covered Tile

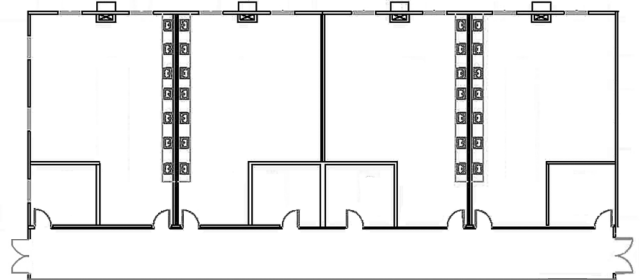
Lighting: Fluorescent

Ceiling: T-Grid

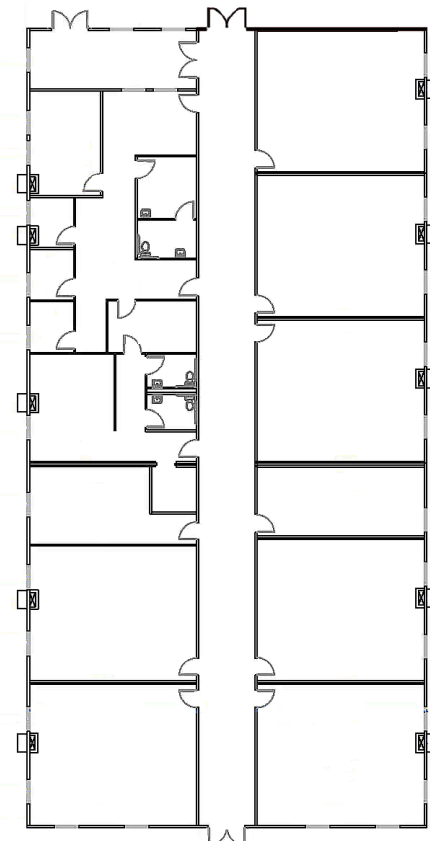
Restrooms: (3) Single Section 2



Section 1



Section 2



\*\*This building is subject to availability. The details provided are for informational purposes only and are not guaranteed. For detailed specifications, drawings and pricing contact your local representative.

## Contact:

Toll-free 877.677.2231

Phone: 732.223.4407

Fax: 732.223.4458

Email: [sales@mspaceholdings.com](mailto:sales@mspaceholdings.com)

## The M|SPACE Promise

You'll receive more industry expertise, more personal attention, and more financing options from M|SPACE than from any other modular space company.