

Type: Classroom

Quantity: One

Number: CR00165

Building Details

Seal: VA, MD, SC

Size: 28' x 66'

Square Footage: 1848

Classification: E - Education

Roof Load: 20 PSF

Wind Load: 100 MPH

Floor Load: Corridor - 100 PSF

Remainder - 40 PSF

Seismic Category: C

Electric: 1 phase / 225 AMP Panel

120/240 Volts

Exterior Details

Siding: Hardiplank

Horizontal Lap

Roof: Asphalt Shingles

Frame: Outrigger

Windows: (6) 24" x 54"

Doors: (2) 36" x 80"

HVAC: (2) 3.5 Ton / 10 kw

Heat Strip

Wall Mount

Interior Details

Wall Finish: Gypsum

Flooring: Classroom - Carpet

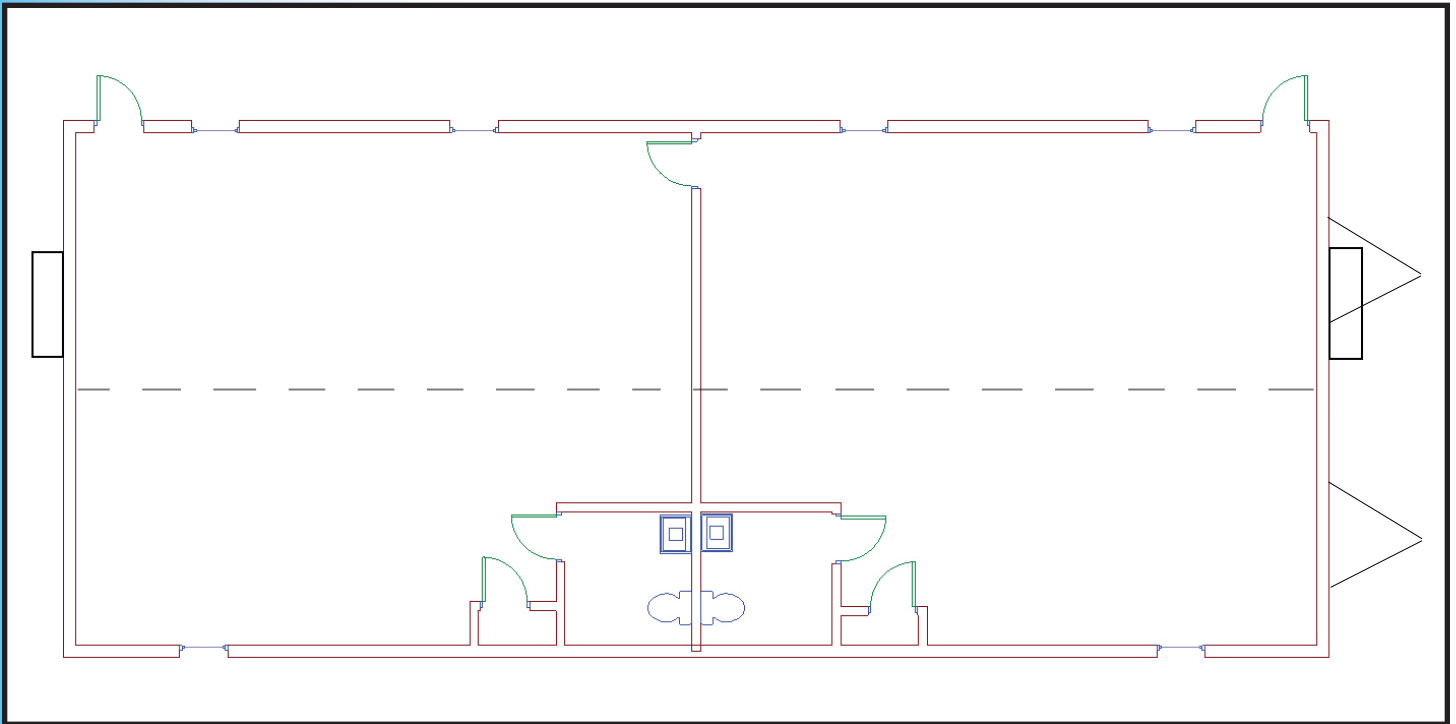
Bathroom - Block Tile

Lighting: Fluorescent

Restrooms: 2

Ceiling: Hard

Additional Features: (2) 4' x 6' Dry Erase Boards with Tray



You'll receive more industry expertise, more personal attention, and more financing options from M Space than from any other modular space company.

Contact

Toll Free: 1.877.677.2231

Phone: 732.223.4407

Fax: 732.223.4458

Email: nmcgrath@mspaceholdings.com

071807